

Vetech View

February 2005
Volume 15, Issue 2

Looking Ahead in 2005

Vetech Software Services, Inc. (800) 677-8832

Attention Equine only clinics

VETECH is readying the release of a new software version designed specifically for equine only clinics. This new version is based on Advantage version 25, so if you have already upgraded to version 25, this upgrade will look very similar. Here is a summary of changes for this version. For more detailed information and release notes, please contact our office:

Inside:

- New Equine Version
- Shortcuts
- Biography
- Humor
- Trade Show Schedule

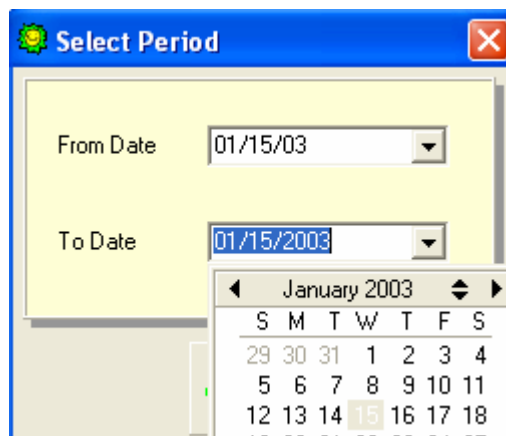
- New patient window: Added fields Registration number, Registration name, Height, Sire, Dam, Markings
- New patient lookup options: Lookup by location, by trainer
- Quickly backdate invoice dates
- Backdate accounts receivable report or client statements
- Add unlimited notes to each line item in an invoice
- Quickly invoice multiple horses for the same service
- New reports including Horses by Location, horses by Diagnosis
- Client and patient notes can print on appointment reports
- And more!

Western Veterinary Conference

VETECH will be displaying in booth# 817 at the Western Veterinary conference in Las Vegas this month. Please stop by and say hello. Please remember a busy trade show floor is not the proper setting for technical support questions and software training.

Date Short cuts

Dates are displayed in many, many places and menus in Advantage. Here are some tips for quickly navigating date fields and changing dates.



Advantage Date menu for reports

Thought for the month: 3 out of 4 people have trouble with fractions.



150 N. Wiget Lane
Suite 211
Walnut Creek, CA
94598

PHONE:
(800) 677-8832
(925) 932-5044

FAX:
(925) 932-5597

E-MAIL:
info@vet-software.com

Using a mouse: You can click the down arrow next to any date field to bring up the calendar tool. From the calendar window, you can click directly on any day to go to that day. Use the left and right arrows to scroll to a different month. Use the up and down arrows to scroll to a different year.

Using a keyboard: You can highlight a date and simply type in a new date (no slashes needed). For example typing in 021505 will enter a date of 02/15/05. You can also use the following keyboard shortcuts for date fields in Advantage.

T = Today

M = First day of the month

H = Last day of the month

Y = First day of the year

R = Last day of the year

+ = Move day forward 1 day (+key on numeric keypad)

- = Move day backward 1 day (-key on numeric keypad)



Biography

Denice Wilkerson - Office Manager

Denice Wilkerson was born and raised throughout the Bay Area of California. Over the past few years, Denice has been a part-time night student at a local Junior College. She is considering directing her studies toward psychology.

Watch For Us!

Vetech will be exhibiting at the following trade shows. Please stop by and say hello!

Western Veterinary Conference

Las Vegas, Feb 21-23

During the past 10 years Denice has volunteered her time at a local church. Denice helps lead 80+ high school students every year in their decision to being confirmed in the Catholic Church. She also Co-Directs one retreat a year for the students.

Denice enjoys many activities such as camping, boating, skiing, and playing pool. With great honor Denice has been an employee at Vetech Software for 4 ½ years. She enjoys being on the front line of tech support and sales answering all calls from Vetech customers. She continues to look forward for many more years to come, serving you.

Tales From The E-Mail

Take a nap whenever you can.



We're on the Web!
See us at:
www.vet-software.com