

# Vetech View

## *Vetech Has Many Advantages*

Vetech Software Services, Inc. (800) 677-8832



February 2006

Volume 16, Issue 2

### Custom User Queries – part 2

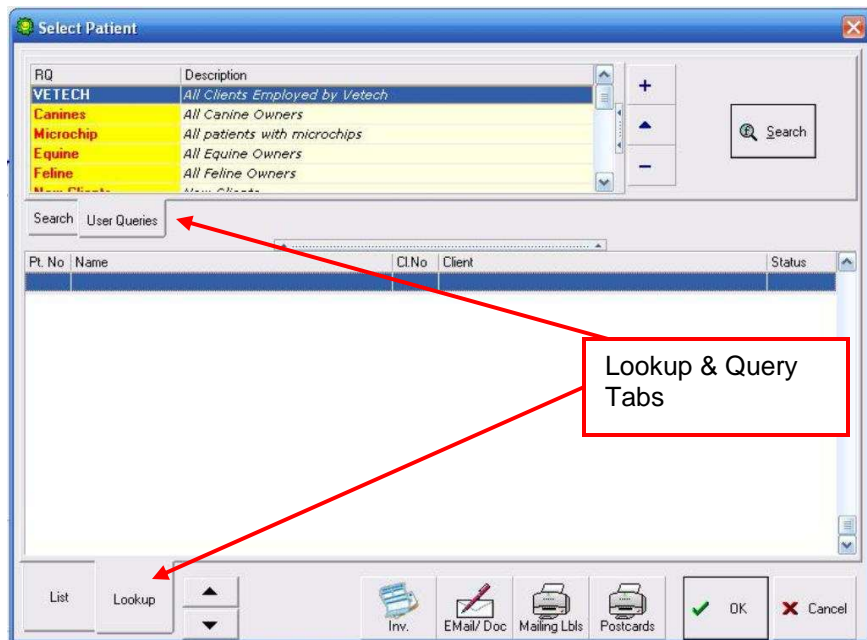
By Matt Sanregret

#### Inside:

- User Queries
- Trade Shows
- Humor

A couple months ago we discussed targeted mailings by using the “User Query” function. The example used was targeting your top clients for holiday thank you notes. This same user query function can also be used for many other functions that are useful for targeting a specific selection of clients. This month we will give an example of finding all Canine’s over 6 years of age for a geriatric promotion. This is a very powerful function that Advantage offers. It is also very easy to use and incredibly fast.

To begin, click on the Patient icon to launch the standard patient lookup window. Next click the lookup tab in the lower left and then the User Query tab.



To start a new user query, click the Plus symbol in the upper right. Fill in both the name and description fields with something that is easy to recognize. For Example:

**Name: Geriatric**

**Description: Canines born before 01/01/99.**

*Thought for the month:* A positive attitude may not solve all your problems, but it will annoy enough people to make it worth the effort.  
- **Herm Albright**



150 N. Wiget Lane  
Suite 211  
Walnut Creek, CA  
94598

PHONE:  
(800) 677-8832  
(925) 932-5044

FAX:  
(925) 932-5597

E-MAIL:  
info@vet-software.com

We're on the Web!  
See us at:  
[www.vet-software.com](http://www.vet-software.com)

Next, click into the table column and select "patient", tab to the field column and select "species", tab to the operator column and select "=", tab to the condition column and type Canine. Press the Enter key to go to the next line. In the far left column, select "And". Tab to the table column and select "patient" again, tab to the field column and select "Birthdate", tab to the operator column and select "<", tab to the condition column and type in "01/01/99". Press Enter to finish this line. Click the OK button to save this new query.

Now you are back to the User Queries menu. Highlight your new query and click the search button. Your list of patients should be displayed immediately. From here you can click the mailing labels icon to print mailing labels for the owners of all these patients. You can also click the E-mail/Doc button to perform a mail merge to print letters or send emails to your search results.

### Conference Update

Thanks to all users that came by and said hello at the NAVC show in Orlando last month. Your comments and testimonies are proof that Advantage software is the best in the industry.

VETECH will be attending the upcoming trade shows:

Western Veterinary Conference - Las Vegas, February 19-23, NV Booth # 817  
California Veterinary Medical Association Conference - San Francisco, June 23-25

We welcome you to stop by and see us. But please keep in mind that a busy trade show floor is not the proper place for software training or to discuss detailed technical support issues.

