

Vetech View

Your Source For Vetech News

Vetech Software Services, Inc. (800) 677-8832

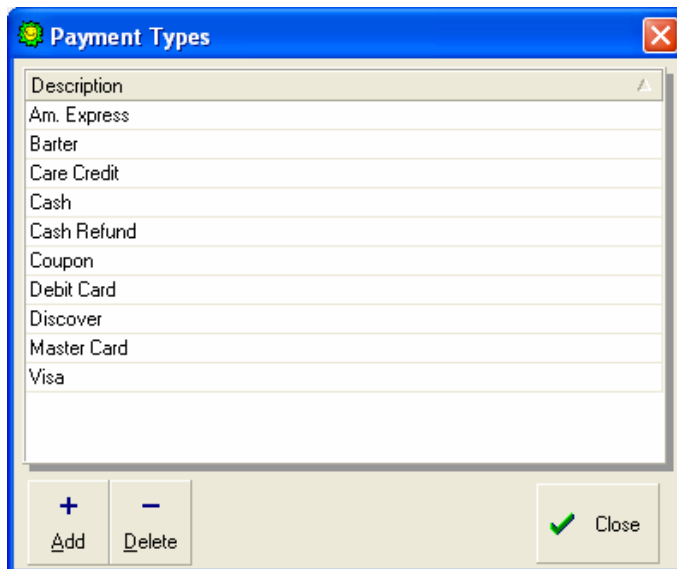
Custom Payment Types

By Mathew Sanregret

One of the new features in Advantage version 25.210 is the ability to customize the payment types that your practice uses. As with other lists in Advantage, payment types are now defined by you. If you want to add a new payment type called “Trade” or “Barter” simply click on Lists/Invoice/Payment Types and the following menu will be displayed.

Inside:

- Payment Types
- Dates
- Pet Portal
- Humor



Payment Types Menu

To add a new payment type, click the Add button in the lower left and type in the new payment description. If there are existing payment types that you don't use, you can highlight that payment description and click the Delete button. If you delete a payment type that has existing payments, you will be prompted for the new payment type to move these existing payments into.

Keyboard Shortcuts for Date Fields

When you work with Advantage, most likely you are frequently entering dates. All reports prompt for date ranges, invoice dates, appointment dates, patient birthdates, etc. Many users like the handy mouse calendar tool included with Advantage. You can quickly scroll days, months, years by clicking on different areas of the calendar tool.

You can also click into the date field and manually enter a date using the keyboard. There are

Thought for the month [What counts is not necessarily the size of the dog in the fight - it's the size of the fight in the dog.](#)

[Dwight D. Eisenhower \(1890 - 1969\)](#)



150 N. Wiget Lane
Suite 211
Walnut Creek, CA
94598

PHONE:
(800) 677-8832
(925) 932-5044

FAX:
(925) 932-5597

E-MAIL:
info@vet-software.com

Holiday Schedule

Please note
that Vetech will
be closed
September 4th
for Labor Day.

We're on the Web!
See us at:
www.vet-software.com

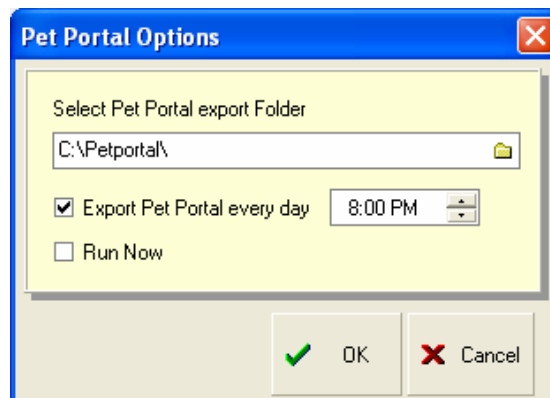
several keyboard shortcuts that are handy for changing dates. You can enter any of the following keys while the cursor is in a date field.

- T = Today**
- M = First day of the month**
- H = Last day of the month**
- Y = First day of the year**
- R = Last day of the year**
- + = Move day forward 1 day**
- = Move day backward 1 day**

So if you wanted to run a report from the first day of the month to the last day of the month, click into the From date and press "M", then click into the To date and press "H". The hot-key letters are not case sensitive, so typing in either "T" or "t" will bring up today's date. Try it! It might save you some time.

Pet Portals – Automatic Export Feature

Many users use the Vet Insite Pet Portals service to allow clients to "login" to your website and see their patient's history, reminders, etc. Exporting your data to Pet Portal is typically a lengthy process and not very convenient to do in the middle of a busy day. Now Advantage offers the ability for the Pet Portal export to run automatically at a set time every day, so it won't interrupt your schedule. To setup this feature, go to File/Export/Pet Portal. The following menu will be displayed.



If you use this automatic export feature, make sure to leave Advantage running on your computer. For more information on Pet Portals contact our office at 800-677-8832.

The Birds and the Bees

A little boy goes to his father and asks "Daddy, how was I born?" The father answers: "Well son, I guess one day you will need to find out anyway!"

Your Mom and I first got together in a chat room on Yahoo. Then I set up a date via e-mail with your Mom and we met at a cyber-cafe. We sneaked into a secluded room, where your mother agreed to a download from my hard drive. As soon as I was ready to upload, we discovered that neither one of us had used a firewall, and since it was too late to hit the delete button, nine months later a little Pop-Up appeared that said:

You got male!